

# **CONFEPASO**

**International Confederation of Paso Horse  
Breeders**

Youth Equitation  
Horse Show Rulebook



## INTRODUCTION

Since its foundation, the International Confederation of Paso Horse Breeders, CONFEPASO, as the principal entity for equine activities at the international level, has worked in its member countries to unify the regulations and judging criteria for Paso horse Youth horse shows.

To accomplish this goal, it has promoted a number of meetings with the international judges currently certified by Confepaso and therefore trained to be able to judge horse expositions organized or authorized by the federations and associations affiliated with Confepaso and the World Cup horse shows organized by Confepaso.

It has also sought to promote the sport of equitation among children and young riders and to unite the youth equitation riding schools with the federations and associations of the affiliated countries as well as establishing among their regulations a set of minimum requirements for the creation of new schools and for the functioning of existing schools so that the participants in these horse shows will belong to a school recognized by the confederated federation or association.

This third edition of the *Youth Equitation Horse Show Rulebook* contains amendments which will apply as of the 5<sup>th</sup> Youth World Cup Horse Show. Confepaso has established it as mandatory for World Cup and International competitions and recommends it for use in national horse shows.

**Ana M. Salgado Micheo**  
**Confepaso President**



## **CONFEPASO**

The International Confederation of Paso Horse Breeders, Inc. or Confepaso, is a non-profit corporation involving animal breeding, formed by affiliate countries with a common purpose.

Confepaso is the entity in the international arena which binds and represents the equine Federations and/or Associations of its member countries and directs, regulates and supervises their technical activities in breeding, exhibition, promotion, development, competition and expansion of the sport.

The affiliate countries are: Germany, Aruba, Canada, Colombia, Curaçao, the United States, Panama, Puerto Rico, the Dominican Republic, Switzerland and Venezuela, represented by their respective Federations and/or Associations. One of their purposes is to host, participate in and regulate Paso Horse sports competitions, including equitation, at the international level.

# **Youth Equitation Horse Show Rulebook**

## **Table of Contents**

<b>Chapter I Championship Horse Shows .....</b>	<b>1</b>
<b>Chapter II CONFEPASO and Affiliate Federations and Associations .....</b>	<b>6</b>
<b>Chapter III Riding Schools and Instructors.....</b>	<b>8</b>
<b>Chapter IV Registration and Competitors .....</b>	<b>10</b>
<b>Chapter V Categories and Judgments.....</b>	<b>15</b>
<b>Chapter VI Paso Horse Equitation .....</b>	<b>25</b>
<b>Chapter VII F1-F2 Scoring System.....</b>	<b>32</b>
<b>Chapter VIII Horse Banks.....</b>	<b>40</b>
<b>Chapter IX Judges.....</b>	<b>45</b>
<b>Chapter X Awards .....</b>	<b>48</b>
<b>Chapter XI Disciplinary Actions .....</b>	<b>49</b>
<b>General Characteristics of the Horse .....</b>	<b>51</b>

# Chapter I

## CHAMPIONSHIP HORSE SHOWS

### Definitions:

- 1. The World Cup (Mundial) Horse Shows:** are those competitions sponsored by Confepaso every two years with the participation of countries affiliated with the Confederation and organized by a representative Association or Federation of the affiliate country. **The World Cup Championships will last three (3) days. Under no circumstances will these classes be able to continue after 10:00 PM.**
- 2. International Horse Shows:** are those competitions sponsored by Confepaso with the participation of two or more affiliate Confederation countries by a representative Association or Federation of the affiliate country.
- 3. National Horse Shows:** are those competitions hosted by a Confepaso affiliate country with the participation of representative Associations or Federations of the affiliate country.

### Article 1. The World Cup (Mundial) Horse Shows

These are competitions organized by Confepaso every two years which comply with the following requirements:

- 1.** The organizers must be Federations or Associations affiliated with Confepaso.
- 2.** They must be organized within the guidelines and regulations established by Confepaso for such purposes.
- 3.** They must be held in countries where some member of Confepaso is incorporated.
- 4.** The participating mounts must have a registration issued by a

Confepaso affiliate Association or Federation and be registered in the different gaits and categories covered in the rules.

5. The organizers must film with the World Cup Horse Shows and all other activities related to it with two cameras. Two copies must be submitted to Confepaso for its historical archives.
6. The Youth Equitation World Cup Horse Shows will be held in the country and city approved by a resolution of Confepaso. The chosen city must have a spacious and comfortable arena with appropriate sanitary conditions, structural integrity and security personnel capacity during the realization of the event.

## **Article 2**

The Federation, Association, Board of Directors or Event Organizing Committee will offer the proper guarantees and mechanisms pertaining to the development and success of the competition, such as: **a horse bank equaling a minimum of 50% of the riders using the bank**, a commitment to comply with the regulations, a place for the sessions, appropriate locations for the event, establishing and following event schedules, trophy acquisition, security for the competitors and for the general public. They must also provide lodging and security for the horses that will be ridden in the competition. They must also procure the budget necessary to carry out the event to a satisfactory conclusion.

## **Article 3**

The Federation, Association, Board of Directors or Event Organizing Committee will appoint a Technical Table consisting of the following members:

- A. President: the president of the Federation or Association hosting the event.
- B. General Director: a representative of the Association or Organizing Board and the highest authority over the event.
- C. Technical Director: a person who will direct the event and be responsible for the operation and efficiency of the Technical Table.
- D. **Control Table: The Control Table will be comprised of a Director of Scoring and a delegate from each participating**

country and two assistants who will keep track of the data and records, as well as the scores.

- E. Ring Master: the person who will control the entry of participants into the arena and who will determine the order of the entries.
- F. Veterinarian: the person who will watch over and attend to the animals participating in the event.
- G. Horse Show Announcer: someone recognized for his or her competence and impartiality.
- H. Medical Personnel: a group of doctors and paramedics who will attend to any emergency.

**Paragraph 1.** The Technical Directors will be in charge of the event starting from reviewing the participants' applications to make sure they are correct, all the way up to handing over the final scores signed by the judges to the Organizing Board. The scores then will be sent to Confepaso and to the archives of the Federation or Association responsible for the competition, after being countersigned by the technical director.

**Paragraph 2.** In the case of acts of God or public mandate, the Federation, Association and/or Organizing Committee of the event will be allowed to make the decision to cancel the event. Confepaso must be informed of this decision for its approval. In such a case, the events judged up to the time of the cancellation will be valid and their scores will be recognized.

**Paragraph 3.** Attendance and participation in a horse show sponsored by Confepaso in any capacity, as spectator, exhibitor or collaborator, is a voluntary act taken by persons on their own behalf, at their own risk, and aware of any eventual harm that could befall them in the course of its exercise. This risk can only subsequently be assumed by working relationships with persons or entities different from those that organize the event. Consequently, the competition organization is not responsible for whatever may happen to the persons that participate in the event. The participants themselves are obligated to take any precautions necessary in order to avoid accidents and injury to their persons, their animals or their belongings. Horse show management is not responsible for thefts or damages caused to real or lawful persons

during the execution of the event.

#### **Article 4.**

#### **Requirements for the Participation of the Horses in the Youth Equitation World Cup and International Shows:**

- A. In order to be able to participate, each mount must be in optimal physical condition. An optimal state of health is defined as that which allows it to perform the functions for which it is designed.
- B. In order to compete, each mount must have a Genealogical Registration issued by a Confepaso affiliate Federation or Association **and must be microchipped.**
- C. In order to sign up for an event, the horse owner must show the original registration documents and health certificates in accordance with the requirements of the country hosting the competition.
- D. Pinto horses or horses with defects listed as disqualifying in the Confepaso Horse Show Rulebook will not be allowed to participate except in cases where these horses are geldings or horses with overbites or underbites. Horses sanctioned for doping whose disciplinary action is still in force with Confepaso or the member country that had imposed the sanction will not be permitted to participate.
- E. Every owner and legal representative will complete and sign an entry form **allowing their horses to be used by the young riders in competition** which will include information relevant to the registration of the mount. Furthermore, the horse owner and/or certified legal representative, will report to Confepaso, its Technical Directors, Judges, members or agents, other owners, employees and participants **in the competition (horse show)**, any damage or claims that could be caused by a mount during the **competition (horse show).**
- F. It is the obligation of the riders and the horse owners to

acknowledge and accept these Rules and they must notify personnel under their charge, assistants, grooms, etc. that ignorance of the rules incorporated in this Rulebook is not cause for their non-compliance.

- G. False Statements on the Entry Forms: Those participants who have submitted false statements or information on their entry forms about themselves or their animals and which have proven to be intentional and deceptive, (even if they were registered by their parents or guardians), will not be admitted into competition.

# Chapter II

## CONFEPASO AND AFFILIATE FEDERATIONS AND ASSOCIATIONS

### Article 5. Organization

At the international level, an organic structure directs and is responsible for the development of the World Cup Youth Championships and for International Championships. It is composed of the International Confederation of Paso Horse Breeders, CONFEPASO and of **the Federations and/or National Associations affiliated with the confederation.**

### Article 6. Functions

The governance of the Youth Equitation Horse Show Rulebook includes sufficient legal authority to maintain and support administrative and technical regulations. Therefore, the conceptual and procedural unity necessary for the participation and scoring of competitors is preserved.

### Article 7. Powers

For the proper exercise of its functions, Confepaso has the authority to regulate equestrian activities. For this purpose, it possesses the following powers:

- A. To expedite and modify the Youth Equitation Rulebook.
- B. To create the World Cup and International Championship calendar of events which includes the different existing categories according to their classification by member country, city and locale. In the normal exercise of its functions, Confepaso may approve or deny the inclusion of new special categories or permanent categories.
- C. To serve as consulting agency in everything related to youth equitation, even in cases not mentioned in this Rulebook, and to offer collaboration required by its officials, for the

benefit of the promotion of the equestrians at the international level.

- D. To act as judge or mediator in conflicts that may arise between affiliate Federations and Associations, the Organizing Committees, and other similar entities, whenever they relate to activities directed or coordinated by Confepaso.
  
- E. To entirely regulate the judging and the scoring of youth riders in World Cup and international championships, while coordinating the existing affiliate Federations and Associations as well as any affiliates to be organized in the future, with the purpose of bringing together social groups devoted to this sport. These new groups will be governed by the statutes that their membership imposes. However, as has already been mentioned, they must follow these rules in their entirety as they affect judging and scoring, in the interest of achieving satisfactory performance at the international level.

# Chapter III

## RIDING SCHOOLS AND INSTRUCTORS

### **Article 8.**

Confepaso, its affiliate Federations and Associations, as well as the Riding Schools, will be responsible for enforcing these rules and making sure that they are being followed.

At the international level, all existing and future Riding Schools will be able to request technical assistance for organizing competitions and for promoting competent instructors.

Every Federation and/or Association is authorized to create Riding Schools in their country.

### **Article 9.**

The Riding Schools that wish to compete in their country's national championship must be enrolled members and recognized as such by their respective Federation and/or Association. (They need not be Association affiliates.) The participating Federations, Associations and Riding Schools are obligated to follow and make available this Rulebook and the guidelines established herein.

### **Article 10.**

Confepaso, its Federations and/or its Associations, are authorized to grant credentials to the participants.

The Riding Schools will be able to register under the name of their choice for the country's national championships to which they belong, but only if they mention the Federation and/or Association in which they are members.

### **Article 11.**

Every existing Youth Equitation Riding School must provide the following resources:

**Physical resources** or infrastructure; **material resources**, like instructional materials, brochures, videos, etc.; **educational resources**, seminars, for example; **human resources**, that is, instructors competent to teach theory and practice, assisting personnel, grooms and various people with knowledge of first aid.

# Chapter IV

## REGISTRATION AND COMPETITORS

### Article 12.

Registration fees will be determined by the organization and there will be no right to refunds, not even if the rider or horse for any reason abstains from participating. Applications for entry will be made in writing fifteen (15) calendar days in advance, on forms provided by the organization, subject to payment of the corresponding fees.

**Paragraph:** The Federations and/or Associations have the right to accept applications and their cancellations not only when they receive the official entry forms but also via Fax machine and international or corporate consignments. The only condition is that the documents contain all of the required information.

### Article 13.

The entry forms will include enough information to correctly identify the competitors. They must provide the following information:

- A. Full name
- B. Age (with a copy of the participant's birth certificate or other form of I.D. and passport)
- C. Identification number
- D. Sex
- E. Category in which he or she will compete
- F. Name of the country he or she represents
- G. Name of the country's Federation and/or Association which he or she represents
- H. Permanent address
- I. Telephone number
- J. Name, sex, gait and registry number of the participant's mount

**Paragraph:** In the event that a registered horse is substituted, the competitor must give the event Organizer proper advance notice so that

General Management can authorize said substitution.

#### **Article 14**

On the entry forms it must be noted that upon registering, the participant and his or her representative must demonstrate knowledge of the Rules contained in this Rulebook and agree to abide by them.

#### **Article 15**

Minors will sign the entry form along with their parents and/or legal guardians, who must have full knowledge of these Rules.

#### **Article 16**

The Federation and/or Association organizing the World Cup Youth Equitation Championship must have a group policy which protects the participants against personal injury.

#### **Article 17**

When a participant is misplaced in a competition or a category because of his or her age, the Technical Director in mutual agreement with the Judges will place him or her in the one to which he or she rightfully belongs.

#### **Article 18**

During the championships, the participants may not exhibit trophies, medals, ribbons or pennants won in other competitions.

#### **Article 19**

The riders must enter the ring with the identification number assigned to them by the Organizing Board, so to be able to identify all of the participants. This number will be used by the show judges to record results.

#### **Article 20**

***Dress Code for the participants, grooms and ring assistants:***



- A. Dark-colored leather boots. The boots must have a low heel, flat sole, and slip easily into the stirrups.
- B. **Black** pants.
- C. White long-sleeved shirt with a collar. Under no circumstances will shirts with embroidery or colored stripes be permitted. The only acceptable marking will be the flag of the country or the logo of the Federation and/or Association represented by the competitor. The size of the flag or logo will be no larger than 10 X 10 centimeters.
- D. The use of a **jacket and black pants with a white shirt and black tie** is optional depending on the ruling of the country represented by the competitor.
- E. The use of a helmet is mandatory for riders up to 12 years of age. The use of a hat over the protective helmet is permissible.
- F. The hat will be white or crème-colored with a black or white band. Any other type of hat is prohibited.
- G. The use of chaps is prohibited.

**Paragraph 1.** The horse show organizers, together with Confepaso, may decide on the proper dress for competition different from that used in International or World Cup competitions.

**Paragraph 2.** **Technical and assistant personnel**, including trainers, grooms, and any other person entering the ring or the pre-screening area, must follow the previously described dress code in regards to footwear, pants, shirt and head gear.

**Article 21**

The use of whips, crops, or spurs is expressly forbidden.

**Article 22**

It is absolutely necessary that the participants be free of disciplinary sanctions imposed by Confepaso or by the ruling Federation and/or Association of the country represented by the rider. Participation is also prohibited to horses disciplined for doping and whose sanction is enforceable by Confepaso or the member country that had imposed the sanction.

**Article 23**

It is the obligation of the competitors, their representatives, instructors, grooms and assistant personnel, to unconditionally abide by the orders and directives of the Management and the Judges, and to exhibit exemplary behavior in accordance with the spirit of good sportsmanship that inspire these events.

**Article 24**

The participants must respectfully accept the unappealable decisions of the judges. If not, they will be subject to disciplinary actions that may be imposed by the event organizers of the competition in which they were incurred, provided the behavior warrants such action, or Confepaso may call those sanctioned individuals to answer to the charges in accordance with the report presented by the technical directors.

**Paragraph.** If the individual receiving the disciplinary sanction is a minor, he or she must be accompanied by his or her parents, guardian or representative at the time he or she is called to respond to the charges.

**Article 25**

In the show ring, the competitors must receive the prizes they

have won in a courteous and sportsmanlike manner. They may be accompanied by their representatives. If their conduct in the show ring is not appropriate, they will forfeit their assigned prize placement and they will be subject to the corresponding disciplinary actions.

### **Article 26**

Any assistance to the competitors once the class has begun is prohibited, except in the Little Junior ("Mini") categories or in case of accident or emergency.

**Paragraph.** In case of accident, and only in this case, will the judges authorize the changing out of riding equipment or piece of riding equipment damaged or in bad condition as a result of the accident.

### **Article 27**

Any competitor exhibiting undisciplined behavior or disrespect for these Rules will be expelled from the show ring. The same holds true for representatives or grooms who show obvious signs of undisciplined behavior or drunkenness, for which they will also be sanctioned according to the current regulations in the Confepaso Rulebook.

### **Article 28**

It is mandatory that the competitors ride Paso Horses, whether they be Paso Finos, Colombian Trocha Pura horses, Colombian Trote and Galope Reunido horses, or Colombian Trocha and Galope horses, duly outfitted in accordance with current Confepaso regulations.

**Paragraph 1.** Before entering the arena, the horses registered for competition must be tested in the pre-screening area to verify their state of health and level of obedience.

**Paragraph 2.** Everything concerning health issues and the handling of the mounts must conform to the policies issued by the health authority of the host country and by Confepaso.

# Chapter V

## CATEGORIES AND JUDGMENTS

### Article 29.

Young male and female equestrians will compete separately, **according to their age and category**. The ages of the participants are classified according to the following categories:

**In the first three categories (“mini”, “preinfantiles” and “infantiles”), the Technical Director will assign security personnel and place them wherever he or she deems necessary.**

- Category 1** Little Junior Girl Riders (Mini-amazonas)  
From age 4 up until the 6th birthday
- Category 2** Little Junior Boy Riders (Mini-jinetes)  
From age 4 up until the 6th birthday
- Category 3** Young Girl Riders (Amazonas Preinfantiles)  
From age 6 to 8
- Category 4** Young Boy Riders (Jinetes Preinfantiles)  
From age 6 to 8
- Category 5** Girl Riders (Amazonas Infantiles)  
From age 9 to 11
- Category 6** Boy Riders (Jinetes Infantiles)  
From age 9 to 11
- Category 7** Junior Girl Riders (Amazonas Junior)  
From age 12 to 14
- Category 8** Junior Boy Riders (Jinetes Junior)

From age 12 to 14

**Category 9** Teen Girl Riders (Amazonas Juveniles)  
From age 15 to 17

**Category 10** Teen Boy Riders (Jinetes Juveniles)  
From age 15 to 17

**Category 11** Young Women Amateur (Amazonas Aficionadas)  
From age 18 to 20

**Category 12** Young Women Amateur (Amazonas Aficionadas)  
From age 21 to 24

**Category 13** Young Men Amateur (Jinetes Aficionados)  
From age 18 to 20

**Category 14** Young Men Amateur (Jinetes Aficionados)  
From age 21 to 24

### **Article 30**

For the individual evaluation of each competitor, the judges will require the execution of various mandatory tests and other optional tests.

### **MANDATORY TESTS**

The mandatory tests will be executed continuously and consecutively in the following order:

- A. **Theory Test:** This test is only given to those participants from the Junior Category and older. These riders will take a written test previously designed by the event judges comprised of questions taken from the Youth Equitation Rulebook or questions about horses, whenever there are guidelines issued on this topic. The judges of the event will score the written test themselves.

- B. **Performance in a Group.** The riders will begin their ride entering to the right, keeping to the outside of the arena at all times. At the discretion of the judges they will make several turns and then will line up for a change of hands or direction and will then be judged moving clock-wise. In the case of horses that execute two gaits (Colombian Trote and Galope Reunido, and Colombian Trocha and Galope), these horses will execute their ride in both gaits, upon the request of the judges.

The change of hands will be made toward the center of the ring, occupying an area that does not exceed three meters, returning to the rail at the same place where the rider began the change of hands then proceeding in the opposite direction, all the while sustaining the same rhythm with all four legs. In the case of Galope horses, as they execute this gait and change direction they must make a proper lead change, that is, the horse must canter with the lead toward the side in which the turn is made and sustain it during the ride in this same direction.

During the change of hands, the loss of cadence, turning on the front quarter or using the rear quarter as a pivot will all be penalized.

Subsequently, the horse will be halted in an area determined by the judges so to proceed with the following tests:

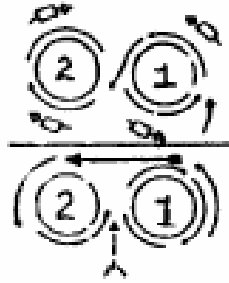
- C. **Figure 8:** All the riders must have their horses execute a figure 8 around two poles set up beforehand for this purpose. The poles will be made of a solid material, bright yellow color, round shape and approximately 10 centimeters in diameter, at a height of approximately 2 meters each and set up at a distance of 3 meters between them. Humans poles may not be used. The use of shrubbery, barrels and other ornaments is not allowed with the figure 8 test poles. It is also prohibited to place other ornamental objects in other locations around the show ring which obstruct the vision of

the riders or their mounts. Spinning in a circle around one of the poles in the figure 8 test, so to show off the reining ability of the mount, is a fault that must be penalized, and the competitor must be withdrawn from the class because it could give the impression of an advantage for the rider or the horse.

In this contest, the competitors must make their horses execute three (3) figure-eights around the poles. The midpoint between the two poles will mark the beginning and the end of each figure-eight. The ride will be executed entering between the first pole and the sounding-board to then cross over through the mid-point toward the second pole in the direction of the outside of the ring to then turn to the right or the left, depending on where the waiting area is, for a total of two figure-eights. They will then proceed from one pole to the other in a straight line, to finally complete one last figure-eight, halting their horses between the two poles. (Refer to the diagram.)

If the participant is riding a two-gaited horse, he or she will complete two figure-eights at the trot and the final one at the gallop.

In this test the judges will observe the softness of the hands, the application of aids in the turns with the balance of the body and the direction of movement to try to sustain the rhythm of the horse. The rider will be penalized for allowing his or her mount to vary from the course, for using a leading rein and/or an indirect rein of opposition and for not maintaining the horse's pace, or for using exaggerated aids on the horse such as kicking, slapping the reins, etc.



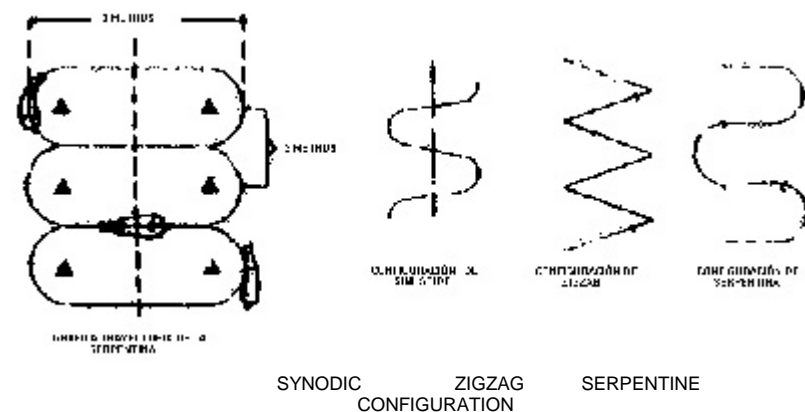
- D. **Backing Up:** After halting the mount between the two poles at the completion of the figure-eight test, each competitor will be judged individually on making his or her horse back a minimum of four (4) steps and a maximum of six (6) steps backward.

The competitor will be penalized if his or her mount does not back up in a straight line, moves its head excessively or opens its mouth. If he or she executes this task using anything but diagonal movements, or if the horse does not raise and lower its legs when backing up, the participant will be penalized.

This will be evaluated on the smoothness of the command to halt, the rider's seat (in relation to his or her relaxed manner, balance, and adherence to the seat), the way the rider guides the horse backwards while being soft on the mouth, the evenness of the **diagonal** steps backward in a straight line, halting the horse completely and moving forward with smoothness, determination and impulsion.

- E. **Serpentine:** After completing the back-up test, each competitor must do the serpentine test in the place **indicated by the Horse Show Director**. This test is done to determine how well the rhythm is sustained and which aids the competitor uses with his or her body to get the horse to change leads in the circles. When it is a two-gaited horse or a combination-gait horse, the test is performed in both gaits. The serpentine test consists of two types of movement

across the ring: half-circles and straight lines. The half-circles are alternated with the straight lines connecting them. In the half-circle the horse's body should bend toward the center of the circle. Upon taking the curve, the horse must not break out of the pattern in successive digressions, in oblique zig-zag lines or in synodic configurations. (Refer to the diagrams.) The two-gaited mounts must execute this test first riding in one direction in one of the gaits, then returning in the other gait. **Each half-circle will be defined by visual objects** so to guarantee that they are done correctly. It is recommended that the obstacles be painted bright yellow.



CORRECT DIMENTIONS

- F. **Sounding Board or Hard Track:** Once the serpentine test is completed, the rider must make his or her mount go over a sounding board in both directions, trying to center the horse across the board. Each two-gaited horse must pass over the board in one direction executing one gait and return over the board in the other gait. The board will be placed at the ground level of the arena. If this is not possible, then there must be an access ramp. The sounding board must be made of a solid and compact material, with boards of high-quality wood or of plywood. It will be 15 to 20 meters long and 2 meters wide. The competitors will not be able to turn their horses on the board nor will they be able to step off the

board. They must enter; make the complete ride, exit the board, and then return to ride over it in the opposite direction. If this is not done, the judges will deduct points from the rider's score. During this test, the judges will watch for cues to the horse, the horse's ears, and the impulsion used to maintain the horse's pace, as well as the control exercised to keep the horse in a straight trajectory. Failing to maintain the pace, allowing the horse to veer from course during the ride and stepping off of the sounding board with a hind leg will result in penalization.

- G. The change of hands in the figure-eight and the serpentine will be optional in keeping with the aids required of each horse according to its degree of training. An excessive or unnecessary change will be penalized.

### OPTIONAL OR DIFFICULTY TESTS

Optional or difficulty tests may be required of those competitors who, according to the judges' estimation, have tied scores, and will be performed in the following order:

1. Changing hands
2. Parallel test
3. Circles
4. Order to halt
5. Change of mounts

1. **Changing Hands or Half-Turn:** This is an optional test that consists of changing direction while moving, turning away from the rail and coming back in the opposite direction along the same rail. Any participant whose mount loses its rhythm or breaks gait will be penalized. If the rider executes this test using a leading rein, pulling on the rein, and/or exerting pressure on the horse's neck as in an indirect rein of opposition, this will also be penalized.



2. **Parallel Test:** The purpose of this test is to compare two or more contestants. The position of the back, which should be natural, the center of balance along the mid-line, the naturalness of the shoulders and elbows, and the position of the legs and the stirrups will all be evaluated.
3. **Circles:** The rider must have his or her horse make **three (3)** circles at least three (3) meters in circumference in one direction, followed by **three** circles of the same size in the opposite direction.

The horse must maintain its momentum, resistance, agility, support, dexterity and response to the rein throughout the test. In performing the circles, the judges will penalize the use of aids such as kicking, pulling on the rein, clucking, moving the elbows or the legs, etc.

4. **Order to Halt then Move Out:** The way the horse comes to a halt, **remains quiet, and moves out** again will be evaluated. The horse must halt by placing the hindquarters toward the center of gravity so that it appears to have come to a stop under bit and not pulled by the bit, then it must begin to move of its own accord in response to the slight cue of the rider, resuming its original speed, with most of the impulsion coming from its hindquarters. The transition to the halt, the rider's balance, and the squaring off of the horse's hind legs will be evaluated in this exercise. In the case of two-gaited horses, the participants cannot be asked to gallop from the halt, just as it is not required in the normal CONFEPASO horse shows.

- 5. Change of Mounts:** In this optional test, the judges will ask the selected candidates to exchange horses. Each of these participants will be given the opportunity to take one or two passes first to become familiar with their new mounts, and then they will follow the commands of the judges who may, at their discretion, ask the riders to perform any of the mandatory or optional tests. For riders twelve (12) years and older in international shows, the finalists will be asked to change mounts as an optional test.

**Procedure:**

Dismount in accordance with the standards established in this manual.

Release the leadline.

Knot the reins.

Hand the horse over to the designated person.

Upon receiving the new horse, untie the reins.

Fasten the leadline.

Mount according to standards.

**Dismounting and Mounting:** To dismount, the rider may slide down from the saddle or use his or her stirrups. The size of the contestant must be taken into consideration. Before mounting again, the rider must check, and if necessary, readjust the chin strap and the cinch. The rider must gather up the reins in the left hand using very little pressure on the reins; stand diagonally by the side of the horse facing front; place his or her left hand on the horse's withers while holding on to the mane or the pommel; turn the stirrups toward his or her body using the right hand and placing the left foot in the stirrup; then placing the right hand on the opposite side of the saddle or on the front panel (the pommel or the horn) immediately afterwards, smoothly lift him or herself up to the saddle, straighten both knees; cross the right leg over the seat of the saddle, then ease down into the seat while placing the right foot into the stirrup without looking down. **In this test, the judges must take into consideration the appearance and behavior of the animal.**

**Paragraph.** Riders under the age of 12 who are allowed to hold the reins one in each hand, will not be faulted for doing it this way in the

figure 8 or in the changing of hands or half-turn test.

# Chapter VI

## PASO HORSE EQUITATION

### Article 31.

Paso Horse equitation highlights the style, grace, and rhythms of the Paso horse and the special relationship between horse and rider. This event is judged 100% on equitation. The results achieved by the horse's efforts are no more important than the method by which they are achieved.

#### A. **Basic Position.**

The rider must at all times appear to be in complete and effective control, guiding the horse in the most appropriate way. Most important is that the horse and rider be completely synchronized.

#### B. **Seat.**

The correct seat is that in which the rider maintains his or her correct position while seeming natural and well-balanced, with the least amount of physical effort and without interfering with the movement and balance of the horse.

#### C. **Position of Arms and Hands.**

The arms should fall naturally without the elbows passing beyond a perpendicular line from the rider's shoulders. The reins should be held in one of the following ways:

- 1) One rein in each hand running from underneath the little finger upward with the bight of the reins hanging to the right side of the horse.
- 2) The reins should pass directly from the ring of the bit to between the little and ring fingers and they should be held down with the thumb. It is important for the ring

finger to secure the sides of the reins with the knuckle closest to the palm, and the fingers should close firmly but without tension. The bight of the rein should always fall to the right side. The hands must maintain a natural position, horizontal to the saddle, and the hands should convey softness, flexibility and control. The height at which the hands are held over the horse's withers is determined by the position of the head carriage of the mount. Nevertheless, an excessively high or low head carriage is undesirable. The hands should not go above or behind the head or the pommel of the saddle. The rider must make every effort possible to maintain a straight line from the elbow to the forearm and from the forearm to the hand, from the hand to the rein, and up to the ring of the bridle. The hands and wrists should remain flexible and not far apart from each other.

- 3) The rider may also hold both reins in one hand, preferably in the left hand; the other hand should also take the reins from over or underneath the first hand so that both hands have control of the reins, but the first hand should stay closed and the bight of the rein should always be draped over the right side. This is the appropriate way to do it while showing in the countries where they are in the habit of doing it this way. The other way (numbers 1 and 2) is acceptable for young riders up to twelve (12) years old.

**D. Position of the Head.**

The rider's head must be held straight at all times, with the chin up and looking forward (between the horse's ears).

**E. Position of the Back.**

The back should be straight, firm but not tense or stiff, with the shoulders straight.

**F. Position of the Legs and Feet.**

The legs should fall naturally. The lower part of the leg

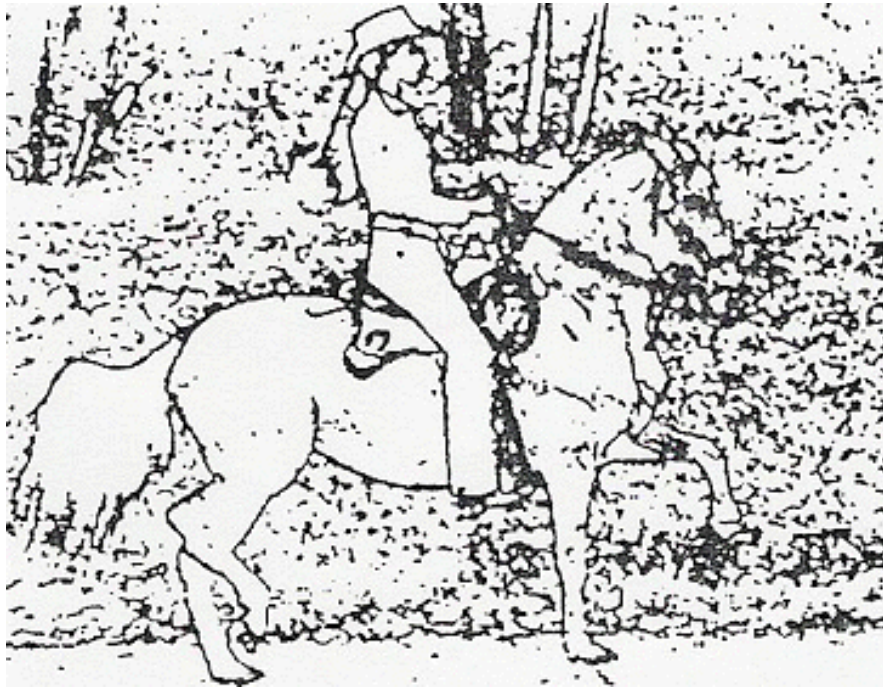
should be under the rider's body and not extended **forward or behind, that is, from the knee down it should follow a straight line toward the stirrup. If not, this will be penalized.** The feet should stay parallel to the horse's body with the heels slightly lowered (approximately 1 inch). The ball of the foot should rest directly over the stirrup, with both feet exerting equal pressure on the stirrups. The hip and the shoulder should be aligned. The position of the foot must be natural (neither too far inward nor outward).

**G. Rider's Position when the Horse is in Motion.**

The rider's position when the horse is in motion should be natural, coordinated and in sync with his or her mount, keeping practically still at any gait. The ideal would be to draw an imaginary straight line from a side view down along the rider's head, shoulder and hip, perpendicular to the ground. The center of balance should be kept directly above the feet and ankles. The front of the arms should fall naturally from the shoulders to the hip bone and should appear flexible, never tight against the body, reaching forward and away from the body. The rider should seem relaxed, comfortable in the saddle, and without the upper part of the body moving from side to side. The rider must remain still in the center of the saddle at any gait performed by the horse without slipping backward over the cantle.

**H. Other aspects of handling ability to be considered and evaluated include the following:**

- 1) Sense of rhythm
- 2) Measurement of speed and cadence
- 3) Softness of hands on the reins
- 4) Minimizing the limitations of the horse
- 5) Maximizing the virtues of the horse
- 6) Aids, subtle yet effective
- 7) Confidence and self-assuredness in the handling
- 8) Relaxed and natural posture
- 9) Poise and elegance



### **Article 32**

Once the horse show begins, the participants and their mounts will be under the sole authority of the judges. This means that no horse or rider may leave the arena without the permission of the judges. In order to safeguard the rights of the public, the judges must, personally or through the announcer as intermediary, explain the reason why they ordered a competitor to withdraw or be excluded from competition.

### **Article 33**

Once the horse show begins, the **Horse Show Director** will organize the entrance of the competitors into the arena, one by one, to make it easier for the show announcer to announce the horses and riders according to the information noted on their respective entry forms. This announcement will be repeated each time a participant enters the ring to perform the individual figure-eight test and again after the event, to announce those who placed.

### **Article 34**

Each participant riding a two-gaited mount must perform **all of the tests** in both gaits **and if he or she does not do this, the rider will be penalized.**

### **Article 35**

The individual testing begins with the figure-eight and ends after riding over the footbridge or sounding board.

### **Article 36**

Optional tests: These will be ordered by the judges and executed by those participants who are tied.

**Paragraph.** These tests are not timed; the judges will exercise this prerogative if the participants observe a reasonable time limit.

### **Article 37**

**The Judges will take the following qualities into consideration as they make their decisions:**

- A. Appearance of the horse and rider.
- B. Synchronization between horse and rider.
- C. Ability and skill in the horse's performance.
- D. Control, sureness and handling of the reins.
- E. Concentration and seriousness.
- F. Good sportsmanship and courtesy in the ring.
- G. Decisiveness and courage.
- H. Practical technical knowledge about the general characteristics of the horse and tack.

### **Article 38**

The Judges in this classification will take into consideration the following faults that may result in a loss of points in the scoring of the contestants:

- A. Distraction, negligence and inattentiveness to the Judges' instructions.
- B. Obvious roughness **toward** one's mount.
- C. Lack of technical knowledge.
- D. Inadequate positioning of the back (the trunk of the body

- leaning forward or backwards).
- E. Inadequate positioning of the hands (open or unstable, **too high or too low**).
  - F. Inadequate positioning of the feet (outward, forward, backward or too deep in the stirrups) **and incorrect support at the base of the stirrup**.
  - G. Rising out of the saddle while the horse is in motion.
  - H. Taking the wrong turns in the circle test **and in the change of hands**.
  - I. Lack of stability or incorrect positioning of the head.
  - J. Using exaggerated aids on the horse (kicking, rein slapping, clucking, etc.).
  - K. Breaking gait.
  - L. Performing the mandatory or optional tests incorrectly.
  - M. Not changing hands correctly in the tests where the horse does turns or closed circles **and lack of naturalness in the posture**.
  - N. Not using the necessary impulsion on the horse.
  - O. Lack of good sportsmanship and courtesy in the ring.
  - P. Not maintaining the proper gait or style of movement of the horse while riding will result in a loss of points for the rider.
  - Q. Uneven stirrups, except in the Little Junior (Mini) categories.  
The proper way to measure the correct length of the stirrup leathers is from the base of the saddle where the cinch is attached up to the base of the stirrup.
  - R. The loss of one or both stirrups.

### **Article 39**

The following are cause for disqualification:

- A. **Total** loss of control over the horse.
- B. Proof of misbehavior against another rider.
- C. Disobeying the Judges' orders.
- D. Causing an unjustified delay in the competition.
- E. Addressing the Judges in an inappropriate way.
- F. Failing the theory test.
- G. Abusing the animals.

### **Article 40**

If any horse is scratched for disobedience after its rider makes various attempts and the horse remains unresponsive, the judges may decide to allow a change of horses from the horse bank. An exchange will be allowed only one time.

**Paragraph.** The causes for disqualification established in Article 39 do not apply to the Little Junior (Mini) and Young Girl and Boy (Preinfantil) categories, but rather will be penalized. There are no causes for disqualification in these categories.

# Chapter VII

## F1-F2 SCORING SYSTEM

### A. Bases of the System

1. The judging will be performed by three (3) **or five (5)** judges who must be active and current Confepaso members.
2. The parameters within which the judges' decisions must be made are those described in Article 37 of the Youth Equitation Rulebook.
3. The judges must make their evaluations separately and individually except during the warm-up period and in situations where there is a tied score.

### B. Procedures to Follow while Working in the Ring

1. **Warm-up Period:** During the warm-up, the participants will enter the ring and begin their ride in a group following the instructions described in Article 30, Number 2 of this Rulebook. During this stage, the judges may congregate together. Subsequently, the horses will be gathered in an area predetermined by the **Horse Show Director for the participants to begin their tests, which are:**  
  
the figure-eight, backing up, the serpentine and the sounding board.
2. **Qualification Stage:** Once the warm-up is concluded, the judges must separate to make their evaluations individually and they may only exchange opinions in the case of a tie between two, three or more contestants.

During this stage the judges will individually observe the way in which the participants execute their mandatory tests and choose a

maximum of six (6) riders who, in their assessment, are **the most promising** of the group. They will do this by writing the number of the contestant on the F1 form which they will then submit to the Horse Show Director or the Control Table. **Once the Control Table has the F-1 form results, the Technical Director will announce the qualifying riders who will then be gathered in an area determined by the Horse Show Director.**

The riders not selected **will be thanked for their participation and excused from the ring.**

**3. Comparison Stage and Final Judgment:** Once the qualified riders are chosen, the horse show director will ask the judges if they have their results. If all of the judges have made a final decision by then, they will proceed to fill in the F2 form. If **one or more judges** has not made his or her decision, the contestants who, in the estimation of the judges, are on equal standing will be called to perform the optional or the difficulty tests described in Article 30 of this Rulebook.

When a participant has committed one of the disqualifying faults described in Article 39 of this Rulebook, the judge is obligated to **inform the Horse Show Director, who will then notify the Control Table, after which the Technical Director will make an announcement excusing** the rider from the competition and explain the reason why he or she is being excused.

**4. Calculation Method:** The judges will write each contestant's identification number on the front of the F2 form (final results form) and record each rider's placement, then submit the form to calculate the scores. If a judge has not written a placement, it will be recorded as 6<sup>th</sup> place.

The scoring system will take into account the following calculations, in order of priority:

- a. The foremost priority will be given to the sum total for which the lowest number will be considered first place and so on, in ascending order.

There is an exception to the sum total priority: if a participant obtains first place on two **or three** judges' cards, **depending on the number of cards (3 or 5)**, then the rider will receive first place regardless of the sum total.

- b. After calculating the sum total, the consensus may be considered, that is, when there are equal scores, the consensus of the judges will dictate the outcome.
- c. The third consideration will be the use of an algorithm, that is, the maximum probability calculated using the highest point score against the lowest point score. In the case of equal point scores where there is no consensus, the algorithm will be used. If the algorithms are equal resulting in a tied score, the competitors will return to the ring to break the tie.
- d. As soon as the semi-finalists have been selected, the control table will record the numbers of the selected riders on a calculation sheet in ascending order.
- e. Immediately afterward, the point score will be totaled for each participant and these will be organized sequentially, taking into account the best place average and the following explanatory notes.

**EXPLANATORY NOTES.** The following will be taken into consideration:

- 1. When a contestant is assigned first place on two **or three** judges' cards, this rider will be the first place finalist regardless of the opinion of the other judge(s). (See the example below)

JUDGE NO.1	JUDGE NO.2	JUDGE NO.3						
<table border="1"><tr><td>1<sup>ST</sup></td><td>10</td></tr></table>	1 <sup>ST</sup>	10	<table border="1"><tr><td>1<sup>ST</sup></td><td>11</td></tr></table>	1 <sup>ST</sup>	11	<table border="1"><tr><td>1<sup>ST</sup></td><td>11</td></tr></table>	1 <sup>ST</sup>	11
1 <sup>ST</sup>	10							
1 <sup>ST</sup>	11							
1 <sup>ST</sup>	11							

2 <sup>ND</sup>	9
3 <sup>RD</sup>	7
4 <sup>TH</sup>	14
5 <sup>TH</sup>	11

2 <sup>ND</sup>	10
3 <sup>RD</sup>	9
4 <sup>TH</sup>	14
5 <sup>TH</sup>	7

2 <sup>ND</sup>	10
3 <sup>RD</sup>	14
4 <sup>TH</sup>	7
5 <sup>TH</sup>	8

### CALCULATION SHEET

HORSE NUMBER	JUDGE 1	JUDGE 2	JUDGE 3	TOTAL POINTS	PLACE
7	3	5	4	12	5 <sup>TH</sup>
8	6	6	5	17	
9	2	3	6	11	3 <sup>RD</sup>
10	1	2	2	5	2 <sup>ND</sup>
11	5	1	1	7	1 <sup>ST</sup>
14	4	4	3	11	4 <sup>TH</sup>

### FINAL RESULTS

1 <sup>ST</sup>	11
2 <sup>ND</sup>	10
3 <sup>RD</sup>	9
4 <sup>TH</sup>	14
5 <sup>TH</sup>	7

- When a place has been declared vacant by two **or three** judges, it will remain vacant in the final judgment. (See the example below)
- In order for a participant to win a prize, he or she must have been placed by a minimum of two **or three** judges. (See example below)

#### JUDGE NO.1

1 <sup>ST</sup>	10
2 <sup>ND</sup>	9

#### JUDGE NO.2

1 <sup>ST</sup>	
2 <sup>ND</sup>	10

#### JUDGE NO.3

1 <sup>ST</sup>	
2 <sup>ND</sup>	10

3 <sup>RD</sup>	7
4 <sup>TH</sup>	14
5 <sup>TH</sup>	11

3 <sup>RD</sup>	9
4 <sup>TH</sup>	14
5 <sup>TH</sup>	7

3 <sup>RD</sup>	14
4 <sup>TH</sup>	7
5 <sup>TH</sup>	8

### CALCULATION SHEET

HORSE NUMBER	JUDGE 1	JUDGE 2	JUDGE 3	TOTAL POINTS	PLACE
7	3	5	4	12	5 <sup>TH</sup>
8	6	6	5	17	
9	2	3	6	11	4 <sup>TH</sup>
10	1	2	2	5	2 <sup>ND</sup>
11	5	6	6	17	
14	4	4	3	11	3 <sup>RD</sup>

### FINAL RESULTS

1 <sup>ST</sup>	
2 <sup>ND</sup>	10
3 <sup>RD</sup>	14
4 <sup>TH</sup>	9
5 <sup>TH</sup>	7

4. In the eventuality of a tied score, and if there is no agreement in the opinions on the score cards of **the two or three** judges to break the tie, the contestants will be called back to perform the optional tests described in this Rulebook. The judges may discuss and exchange opinions, after which they will fill out the F2 form. (See the example below)

#### JUDGE NO.1

1 <sup>ST</sup>	10
2 <sup>ND</sup>	9
3 <sup>RD</sup>	7

#### JUDGE NO.2

1 <sup>ST</sup>	11
2 <sup>ND</sup>	10
3 <sup>RD</sup>	9

#### JUDGE NO.3

1 <sup>ST</sup>	9
2 <sup>ND</sup>	11
3 <sup>RD</sup>	10

4 <sup>TH</sup>	14
5 <sup>TH</sup>	11

4 <sup>TH</sup>	14
5 <sup>TH</sup>	7

4 <sup>TH</sup>	7
5 <sup>TH</sup>	8

#### CALCULATION SHEET

HORSE NUMBER	JUDGE 1	JUDGE 2	JUDGE 3	TOTAL POINTS	PLACE
7	5	5	4	14	4 <sup>TH</sup>
8	6	6	5	17	
9	2	3	1	6	
10	1	2	3	6	
11	3	1	2	6	
14	4	4	6	14	5 <sup>TH</sup>

#### FINAL RESULTS

1 <sup>ST</sup>	Decided by breaking tie
2 <sup>ND</sup>	Decided by breaking tie
3 <sup>RD</sup>	Decided by breaking tie
4 <sup>TH</sup>	7
5 <sup>TH</sup>	14

- If the judges have not declared the fifth place slot empty on their cards but instead each judge has selected a different rider for fifth place, they will apply rule 17 and the participants will return to the ring to decide the fifth place winner.

#### **Announcing the Results**

The judge in charge of announcing the results of the competition will be the judge who had come closest to the final score. If there are several judges who had arrived at the same decisions, then the announcing judge will be chosen arbitrarily.

## **F1 Forms, F2 Forms, Calculation Sheets and Final Results Sheets.**

The F1 and F2 forms, as well as the Calculation and Final Result Sheets, will be distributed by Confepaso to each affiliate Federation and Association.

Within fifteen days after the conclusion of the horse show, these documents must be sent to the President of the Confederation to be placed in the files in the eventuality of a dispute.

The information recorded on the F1, F2, Calculation and Final Results sheets is strictly confidential and cannot be released or shown to **anyone outside of the control table** during the horse show. Any infraction of this rule will be severely sanctioned by the technical director of the horse show.

Calculation sheets **will be** available to the **delegates** upon their written request to the Confepaso Board of Directors, who will then be obligated to respond within thirty (30) days following receipt of the request.

### **Youth Rider Horse Show Scoring Table**

Ability and handling:	
Control, self-assuredness and concentration	30 points
Use of aids	15 points
Theory test knowledge and ride	15 points
<b>SUBTOTAL</b>	<b>60 points</b>
Body position	8 points
Back	8 points
Arms	8 points
Hands	8 points
Legs	8 points
Feet	8 points

SUBTOTAL	40 points
TOTAL	100 points

Note: The presence of trainers, parents, participants or of anyone other than those designated and identified by the organization is absolutely prohibited at the control table. The violation of this article will automatically be cause for the disqualification of those participants present at that time.

# Chapter VIII

## HORSE BANKS

- A. All horses participating in the horse bank must remain in the horse bank for seven (7) days. **The host country designated by Confepaso must provide a minimum of 50% of the registered participants.**
- B. Participating horses will enter the horse bank on the first day and may not leave the bank until the eighth day. **The horses must be fully identified by microchip. Each horse must have an assigned bridle, identified with a codified stamp which must at all times match the horse's microchip number. No horse will be permitted entrance into the ring, for practice or for competition, without the assigned bridle.**
- C. The horse lottery will be drawn at the end of six days prior to the World Cup horse show with a representative of each participating country. The host country will be the last to draw.
- D. Practice sessions with the different equipment will begin the day after the lottery.
- E. The horse bank will be under the charge of **a committee named by Confepaso and the** official personnel of the host country association and these will be the only people in charge of dispensing horses.
- F. Each category will have a maximum of **six (6)** participants per country.
- G. Participants who bring their own horses, whether owned or leased, will have the privilege of being the first ones to use them during **the day of his or her event**. If the participant rides on Sunday, the horse will be used twice on Saturday.
- H. After riding in the participant's event, the participant's horse will be placed back into the lottery two more times.

- I. The horse will compete a maximum of three (3) times on the weekend, limited to a maximum of two times a day.
- J. If the participant's first event is Sunday, the horse will go to the lottery the **days** previous.
- K. If there are two siblings with the same horse, whether owned or leased, they may both use the same horse but afterward the horse will return for an additional lottery selection.
- L. The participating horses may only be excused by the designated veterinarian. It must be clearly understood that any excused horse will not be able to participate in the rest of the World Cup horse show.
- M. If a rider requests a different horse than the one assigned to him or her in the lottery, this request must be evaluated by a special Confepaso committee. If the request is granted, the participant will return to the lottery to draw a new horse from among those available for the event in which this participant will be competing.

## Horse Stable Rules

- A. All horses participating in the horse bank must remain in the horse bank during the regulatory seven (7) days and will compete three (3) times a day during the World Cup horse show.
- B. Participating horses will enter the horse bank the first day and leave the eighth day.
- C. Only duly identified horse owners, technical staff and trainers from the different countries will be permitted to enter the horse bank area to get the youngsters' mounts.
- D. The horse bank will be handled by a committee named by Confepaso and the official association personnel and these will be the only people to dispense the horses from the lottery.
- E. Head gear for each horse including, of course, the bridle, must remain accessible for training and will under no circumstance be switched for competition without the previous authorization of the horse bank committee. Switching bridles without authorization will result in appropriate disciplinary sanctions.
- F. For the purposes of expediting the training sessions after the horse selection, the organization will submit to each delegate a list of the horses assigned to the participants including the number of the horse's stall and name of the owner.
- G. The stalls of each of the animals in the horse bank will be identified with a placard listing the following information: horse's name, stall number, registration number, color and person responsible. After the lottery, the placard will include the names of the participants assigned to the animal.
- H. It is absolutely prohibited to train outside of the schedules established for each delegation. Violation of this rule will oblige the organization to immediately eliminate the participant from the World

Cup competition for transgressing the rights of equality of opportunity afforded to all of the competitors.

- I. It is explicitly prohibited for any competitor to switch assigned horses without the previous authorization of the organization and without a justification verifiable by the horse bank committee. Violation of this rule will result in automatic elimination of the competitor and disciplinary sanctions placed on the corresponding delegation, subtracting ten points from their general score. It is the obligation of the directors of each delegation to oversee the ethics and clean sportsmanship of the members of their team. Internal sanctions will be the responsibility of the corresponding delegation, but it is recommended that they be sufficiently drastic so as to avoid any repetitions in the future since this damages the reputation of the country. These should be reported to Confepaso. Confepaso must then sanction the offending delegation as an example.
- J. As soon as the competitors arrive at the pre-screening area, the bank horses should be present, showing their original registration and, if possible, with their microchip to verify their identity. This is a way to avoid substitutions prohibited in the regulations. Any horse that cannot be duly identified will not be able to enter the competition. It will primarily be the evaluating committee who will make sure all the horses from the bank have their proper documentation. The competitor will be responsible for verifying with the assigned horse's owner that it has the proper documentation. Showing up in the pre-screening area without proper documentation will not give any young rider the right to exchange horses and he or she will automatically lose his or her right to compete.
- K. It is expressly forbidden to hurl insults or direct foul language toward responsible organization personnel or any other member of the technical committee. If the person committing this violation is the representative of any of the participants, their trainers or their delegates, the competitor will be excused immediately from the competition and will lose any prizes awarded during this competition. The offender will be automatically disciplined, excused from his or her charge and will lose the right to be a member of the delegation. The delegation to which he or she belongs will lose ten points from the

general score. Furthermore, a formal complaint will be raised before Confepaso which will extend the sanction in accordance with the disciplinary code.

# Chapter IX

## JUDGES

### **Article 40.**

The judges must fundamentally base their evaluations on the performance, ability and quality of the young riders as equestrians.

In making their decisions, they should not consider the quality, reputation or importance of the mounts that the equestrians ride in competitions.

### **Article 41**

When explaining their faults to them, the judges should review the merits of the **qualified** riders. The explanation should be done in a constructive and instructive way, detailing the reasons for each score.

### **Article 42**

The judges have complete autonomy to cancel an event, as well as a category, when the quality of the competitors is unsatisfactory.

### **Article 43**

The events will begin when the announcer, under the orders of the Technical Table, declares them closed to entries and open to judging. From this moment on no other competitor may enter the arena. An event will end when the judge finishes assigning the results to the riders of each category.

### **Article 44**

Youth Equitation horse shows held in any Confepaso member country with the endorsement of its Federations and/or Associations and under the auspices of the International Confederation of Paso Horse Breeders (Confepaso), will be evaluated by judges who have ample knowledge of Youth horse shows and who are registered in the Technical Department of the Federation and/or Association of their country.

**Paragraph.** No Confepaso affiliate Federation and/or Association may invite a judge from outside the country whose name is not registered with the Technical Department of the Federation and/or Association of their home country in order to judge a Youth World Cup Championship or Youth International Championship that they have organized.

#### **Article 45**

Those persons who have fulfilled the ethical, knowledge and general cultural requirements established by the Rules and their prevailing regulations on the judging of this type of competition, will be able to judge in the International Youth horse shows.

**Paragraph.** A judge must be an active and current member in order to participate. That is, he or she must not have resigned his or her membership, in writing, from the Federation and/or Association of their country, and there must not be any disciplinary actions imposed against him or her by these Federations and/or Associations which would nullify the exercise of his or her duties.

#### **Article 46**

The Youth Equitation Judge identification card is proof of the status and ability of a person in the exercise of his or her duty to judge the corresponding competitions. To act as a senior judge in the World Cup or International Championships held by Confepaso and its Federations and/or Associations, the owner of the identification card must be a member of the Technical Department of the Confederation.

This membership is a requirement before a judge's ID card, duly signed by the president, will be issued to him or her. It is the only credential needed to judge in the horse shows. Point scores obtained in Youth International horse shows decided by judges who do not fulfill this requirement will not be valid for youth riders registered to compete in the international circuit.

**Paragraph 1:** Periodic verification of the judges' technical knowledge and performance in horse shows: Just as in other activities, it is absolutely necessary that the Confepaso Technical Department do a periodic knowledge and performance check on the judges as often as appropriate for the type of activity. For this purpose, they will give

regulatory written and practical knowledge and performance tests to the judges registered to judge horse shows in the different categories.

This procedure will be cause for a specific ruling to periodically verify the quality of the judges, with the resulting cancellation of their membership in the Federation and/or Association Technical Department if they do not prove to be working for the improvement of the sport of horsemanship or maintaining technical levels of efficiency.

**Paragraph 2:** The judges' Horse Show I.D. card can be revoked for a judge's bad behavior or by a resolution issued by the Confederation, Federation and/or Association Board of Directors by the same procedure by which it had been granted, before satisfying related official procedures.

#### **Article 47**

Appointment of Judges: To judge a World Cup or International Horse Show, the judges will be named in accordance with prevailing Confepaso regulations. They will be chosen from official lists of active and current Confederate Federation and/or Association Judges. There is no prohibition against a judge being nominated and appointed to judge a World Cup event after he or she has judged in the previous World Cup, however, these judges may not participate as judges in more than two consecutive World Cups.

**Paragraph.** In case a judge is disqualified due to being a blood relative or close friend of a participant and/or his or her family, or if the competitor has been a riding student of the judge, an alternate judge will be appointed.

#### **Article 48**

Dress code for the judges:

- White straw hat with a black or white band
- White shirt with a tie
- Dark-colored suit
- Dark-colored leather boots or shoes

**Note: The use of jeans is prohibited.**

# Chapter X

## AWARDS

### Article 49.

The prizes and distinctions granted for the different classifications and placements are as follows:

TITLE	PRIZE
1. Youth Champion	Tricolor Ribbon
2. First Place	Blue Ribbon
3. Second Place	Red Ribbon
4. Third Place	Yellow Ribbon
5. Fourth Place	Pink Ribbon
6. Fifth Place	White Ribbon
7. Honorary Mention	(For all riders)

### Article 50

Based on the points scored, the Youth Championship Horse Show Board of Directors will also grant a prize to the affiliate Confepaso country that obtains the most overall points.

### Article 51

To determine the scores of the Youth Championship or of each of the International and National Championships, refer to the following table:

PRIZE	TITLE	POINTS
Gold Medal	CHAMPION	5 Points
Silver Medal	FIRST PLACE	3 Points
Bronze Medal	SECOND PLACE	1 Point

# Chapter XI

## DISCIPLINARY ACTIONS

### **Article 52.**

The International Confederation of Paso Horse Breeders, Confepaso, is the organization with the right to impose disciplinary sanctions on any person or lawful entity participating in a Youth World Cup or International Championship organized or endorsed by Confepaso. It may discipline any person or entity for the following reasons:

- A.** For performing acts intended to harm the normal course of the Championship or any public activity put on by Confepaso.
- B.** For directly or indirectly offending any horse show or public activity authority, verbally or physically, as the result of any decision, explanation or interpretation made in the discharge of the duties of said authority or of any of his or her companions, inside or outside the arena, during the events or after them.
- C.** For non-compliance with any of the obligations imposed by this Rulebook.
- D.** For participating in any acts contrary to those established in the Rulebook or contrary to generally accepted rules of morality and good behavior.

### **Article 53**

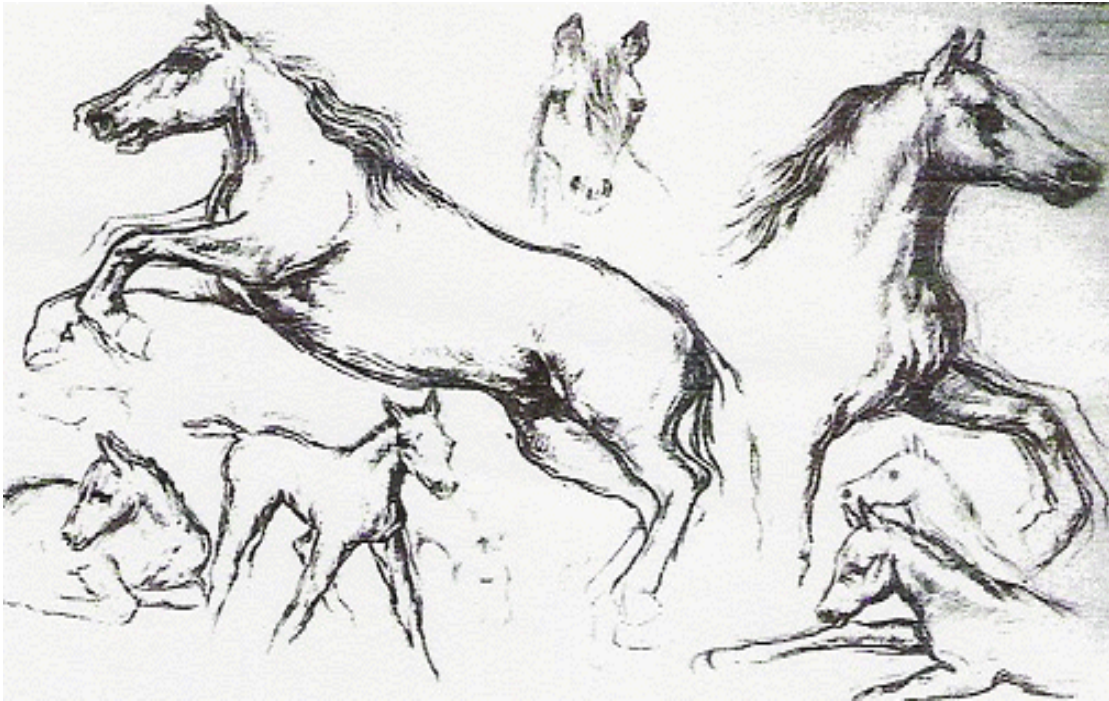
All the Confepaso representative Federations and/or Associations in the different countries will be in strict compliance with all of the disciplinary actions imposed by Confepaso. Their non-compliance may result in their separation from Confepaso.

No Confepaso representative Federation and/or Association in the

different countries will lift or in any way modify any disciplinary action imposed by Confepaso; this is solely within the right and jurisdiction of Confepaso.

**Article 54**

Any procedure related to charges brought before the Confederation or the imposition of sanctions by Confepaso will be performed according the rules contained in the Chapter on Disciplinary Actions in the Confepaso Horse Show Rulebook.



## **General Characteristics of the Horse**

Every rider, besides knowing how to ride, should have some basic knowledge of the horse.

In this section we present some of the horse's characteristics which should be kept in mind for the theory test that the judges will give to horse show participants beginning at the Junior level.

### **1. DESCRIPTION OF THE HORSE**

<b>Scientific Name:</b>	Equus Caballus
<b>Family:</b>	Equine
<b>Order:</b>	Perissodactyl
<b>Class:</b>	Mammal
<b>Type:</b>	Vertebrate

An herbivore with an excellent memory, the horse has a very sensitive sense of hearing and of smell. Its cry, a whinny, expresses pleasure, anger, desire, fear and pain.

Its body is composed of a skeleton, joints, and muscles which are divided into the head, the neck, the trunk or barrel of the horse, and the legs.

### **THE HEAD**

The head should be proportional to the body, preferably small.

### **THE NECK**

The neck is formed by seven (7) vertebrae located between the head and the trunk. It is used for balance, since the horse's weight, shape and movement directly affect the balance of the horse.

### **THE TRUNK**

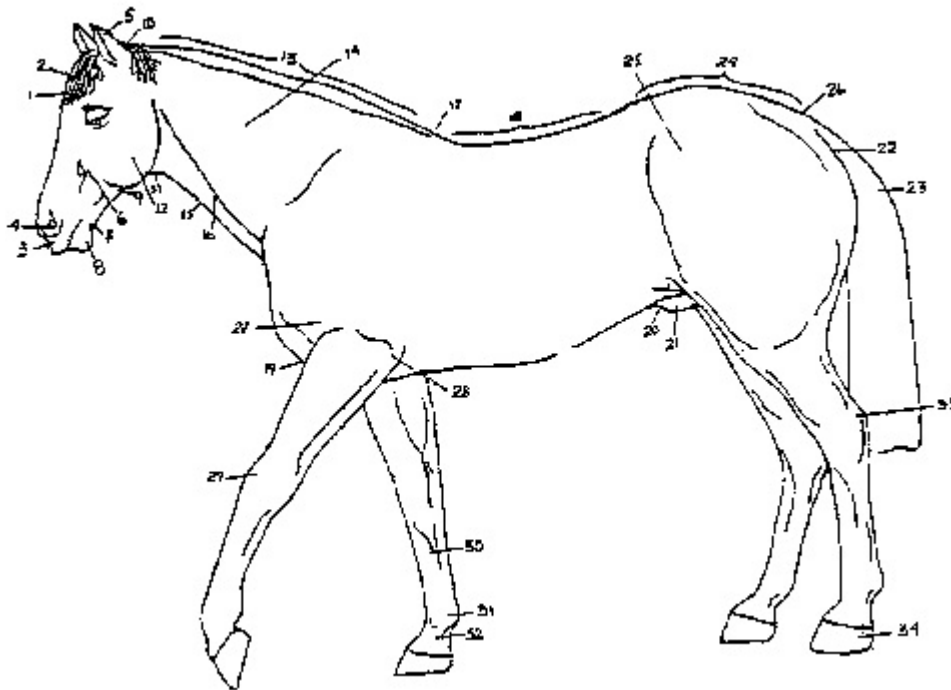
The horse's anatomical base is formed by eighteen (18) dorsal vertebrae, six (6) lumbar vertebrae, and between approximately eighteen (18) and twenty one (21) coccyges bones, eighteen (18) pairs of ribs and the sternum or breastbone, with their respective muscles and organs.

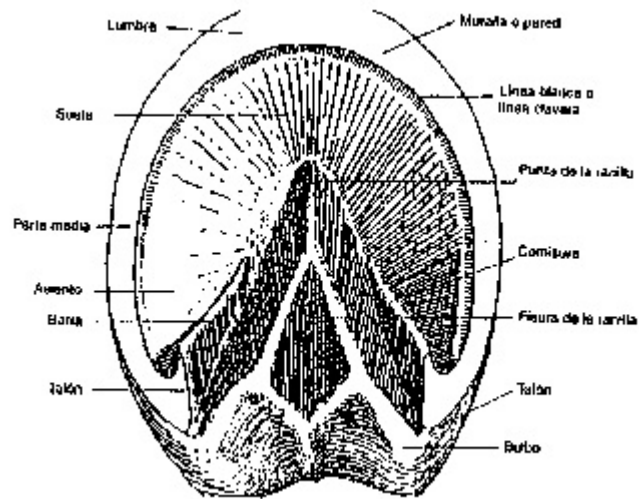
### **THE LEGS**

These are the horse's basic agents of impulsion and they include the front legs and the hind legs.

## PARTS OF THE HORSE

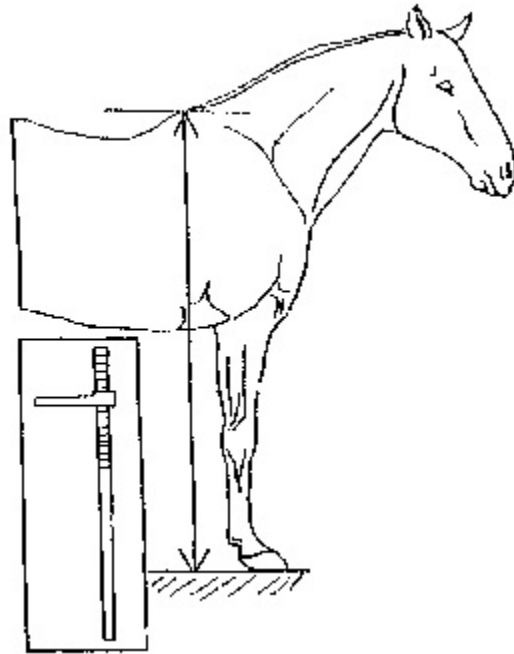
- |                  |                          |
|------------------|--------------------------|
| 1. Forehead      | 18. Back                 |
| 2. Forelock      | 19. Chest                |
| 3. Muzzle        | 20. Flank                |
| 4. Nostrils      | 21. Genitals             |
| 5. Ear           | 22. Buttock              |
| 6. Cheek         | 23. Tail                 |
| 7. Chin          | 24. Croup                |
| 8. Under Lip     | 25. Point of Hip         |
| 9. Pharynx       | 26. Dock or Root of Tail |
| 10. Poll         | 27. Shoulder             |
| 11. Throat Latch | 28. Elbow                |
| 12. Jaw          | 29. Knee                 |
| 13. Crest        | 30. Cannon               |
| 14. Neck         | 31. Fetlock              |
| 15. Throat       | 32. Pastern              |
| 16. Jugular      | 33. Hock                 |
| 17. Withers      | 34. Hoof                 |





## PARTS OF THE HOOF

- |                   |                      |
|-------------------|----------------------|
| 1. Toe            | 7. Hoof Wall         |
| 2. Sole           | 8. White Line        |
| 3. Middle Section | 9. Point of the Frog |
| 4. Seat of Corn   | 10. Commissure       |
| 5. Bar            | 11. Cleft of Frog    |
| 6. Heel           | 12. Heel or Buttress |
|                   | 13. Bulb             |



## HEIGHT OF THE HORSE

The horse's height is measured from the ground to the withers, which is the highest point along the horse's spinal column. The measurement is taken with a special measuring stick consisting of a bar set perpendicular to a graded stick which then moves up and down the ruler. To determine the horse's height with this instrument, the ruler must be set flat on the ground. (Refer to the diagram.)

**Minimum Heights:** The following height standards have been established for participation in CONFEPASO horse shows:

- A-** For Colombian TROTE and GALOPE REUNIDO and Colombian TROCHA and GALOPE horses:

HORSES AGE	MALES	FEMALES
From 18 to 24 months old	1.31 meters	1.30 meters

From 24 to 30 months old	1.34 meters	1.32 meters
From 30 to 36 months old	1.35 meters	1.34 meters
From 36 to 48 months old	1.37 meters	1.36 meters
From 48 to 60 months	1.38 meters	1.37 meters
Older than 60 months	1.40 meters	1.38 meters

**B-** For Colombian TROCHA PURA and PASO FINO horses:

<b>HORSES AGE</b>	<b>MALES</b>	<b>FEMALES</b>
From 18 to 24 months old	1.29 meters	1.28 meters
From 24 to 30 months old	1.32 meters	1.31 meters
From 30 to 36 months old	1.34 meters	1.32 meters
From 36 to 48 months old	1.35 meters	1.33 meters
From 48 to 60 months	1.36 meters	1.34 meters
Older than 60 months	1.38 meters	1.36 meters

## **PHENOTYPE**

It is the sum total of common hereditary characteristics that determines a species. In the case of the horse, these characteristics consist of the head, neck, chest, belly, croup, tail, proportions, height and color.

The weight, dimensions and size of the different parts of the body must be closely proportionate to give grace and beauty to the whole and order to their functions, so to achieve the ideal phenotype.

## **2. HORSES' AGE**

Equine chronometry is the study of horses' ages. ("Cronos"

means time and "metry" means measurement.) We base our knowledge of a horse's age on the signs found in certain parts of the body, mostly the teeth, so that we can figure out the time passed since its birth until the time of its examination. Why is it so important to know the exact age of our horse?:

- a)** To establish the comparative parameters of the relationship between size and age in the different stages of development for each horse.
- b)** To be able to assign tasks appropriate to the age of each horse.
- c)** To measure the horse's level of obedience according to its age.
- d)** To correctly handle the topic of hygiene and health, since this will vary according to age.
- e)** To handle the matter of reproduction.

The teeth are the only body parts whose gradual development and anatomical changes will determine almost exact dates for the horse's age, judging from the wear caused throughout the years.

To begin the examination of changes produced in the teeth by which we may judge the horse's age, we must know how many teeth horses have and how they are placed along the jawbone.

The horse has six (6) incisors, two (2) canines, six (6) baby or temporary molars and six (6) permanent molars on each jawbone, totaling 40 teeth in all.

Since mares do not have canines or tushes, they only have 36 teeth total. (There are exceptions to this rule.)

Depending on their position, the incisors have different names: the incisors in the front part of the jawbone are called first teeth or nippers; the next pair is called second or intermediate teeth; the following pair is

called corners.

Before describing the formulas we must follow to determine the age of the horse, we will define a list of terms of great importance to our study:

**Plane Surface:** This is the chewing surface that comes into contact with one or more teeth from the opposite jawbone.

**Wear:** The crown of the tooth on the plane surface has a hollow cavity called a dental cup which has a front and back border; the grinding down of these borders is what we call wear.

**Bite:** This is when each tooth makes contact with the corresponding tooth on the opposite jawbone.

**Swelling:** We will use the term swelling to describe the state of the gums when the permanent teeth begin to exert pressure on the milk teeth to eventually replace them.

The first set of incisors is called milk teeth and the second set is permanent teeth. One can tell the difference between them because the milk teeth show small grooves in front and they seem to be separated from the root by a depression called a neck joining the root to the crown. The permanent teeth do not have these characteristics.

When the foal is born it has no teeth; the first four (4) teeth or nippers usually erupt between six (6) and twelve (12) days, although they may not appear until thirty (30) days later.

- Between 30 and 40 days the second teeth appear.
- Between the 3rd and 10th month the third and final set of temporary teeth appear.
- In the 10th month the nippers show wear.
- At 12 months the second incisors show wear.
- At 18 months the last incisors show signs of wear and the first permanent molars are cut.
- At 24 months the second set of permanent molars erupts.
- At 27 months the nippers begin to swell.
- At 30 months the nippers begin to shed.

- At 36 months the nippers are replaced by permanent incisors and the second set begins to swell.
- At 42 months the second set shed.
- At 48 months the second set are replaced by permanent teeth and at 52 months the last set swell and the canines are cut in male horses.
- At 54 months the last set are shed.
- At 60 months the last set are replaced.

**NOTE:** up until this time the horse is considered to be a colt or a filly.

- At 72 months the permanent nippers show wear.
- At 7 years the second set of incisors show wear and the last upper set show a notch called a dovetail.
- At 8 years the last set are worn down.
- At 8 years the last lower set show signs of wear.
- At 9 years the upper nippers show wear.
- At 10 years the second upper set show wear.
- At 11 years the last upper set show wear.

It is very important to point out that the plane surface of the tooth is elliptical until age 4, rounded until age 9, triangular up to about 13 years of age and biangular at 18 years and above.

In a young horse the closed jaw forms a semi-circle; as the horse gets older, this semi-circle takes on a progressively sharper angle over the years as the horse ages.

**Characteristics of the Older Horse:** When a horse grows old the head comes to look sad and bent down, the flesh loses its elasticity, the bones jut out more, the hollows under the eyes become deeper, the lips get more wrinkled and sometimes the color of the skin even changes.

**Defects in the Horse's Teeth:** The rules to determine the horse's age have some exceptions: the dental surface is worn more rapidly in some horses than in others due to climate or feeding. A horse can have an underbite or an overbite.

**Underbite:** The lower row of teeth juts out farther than the upper row.

**Overbite:** The upper row of teeth juts out farther than the lower row.

### 3. DESCRIPTION OF THE PASO HORSE

The horse that arrived in the New World in the 15th century is basically the prototype for the Paso Horse; not only are Pasos distinguishable by their characteristic way of walking, they all belong to the same phenotype. The Paso Horse is characterized by the symmetry of its parts. It is well-shaped, elegant and well-proportioned.

**Head:** The head should be in good proportion to the rest of the body, with a wide forehead, and a strong, well-defined jaw line. The eyes are large, dark and widely-spaced, expressive and attentive, and they do not show any white around the edges. The profile should be straight, and the ears should be small, narrow, well-placed, alert, wide at the base and curved inward at the tip. The lips should be firm, of even length, and the nostrils should be large and dilatable.

**Neck:** The neck should be medium in length, muscular but flexible, arched in its upper portion and straight in its lower portion, full, robust, and it should join the body neatly. The mane is abundant, with straight or wavy hair of a fine, silken texture.

**Body:** In its front section, the horse should have high, long and muscular withers. The withers should be at the same height from the ground as the croup. The chest should be long, deep, wide and muscular, with moderately long, wide, graceful and muscular shoulders. In the midsection, the back should be short, solid, wide and straight. The top line should be proportionally shorter than the underline. Along the top, the croup should be straight, wide and strong. The rump should be full, round and muscular, sloping slightly from the horizontal line, and with strong hocks. The tail should be set moderately high, with luxuriant, long, fine, abundant hair. It should be elevated and horizontal forming an arch when the horse is in motion.

**Legs:** The legs should be long, moderately muscled, and perfectly plumb. The knees should be ample, straight, free-moving, covered by a fine skin and free of any injury. The hocks should be straight, although a small amount of proximity between them is acceptable. The cannon should be moderately short, fine, clean, and with strong, well-defined tendons. The fetlocks should be round, ample and perfectly aligned. The pasterns should slope backward at approximately 45 degrees and the hooves should be proportionate to the body, smooth and solid.

**Proportions:** The Paso horse bloodline is characterized by the horse's proportions. The height of the withers measured from the ground should be equal to the height of the croup. The distance from the fetlock to the bottom of the horse's barrel should be equal to the distance from the lower part of the barrel to the withers. The distance from the point of the shoulder to the withers should be equal to the distance from the withers to the point of the hip and then to the farther point of the rump.

**Colors:** Every equine color is acceptable with the exception of the following disqualifying patterns:

**Leg Markings:** When the color marking of the horse's limb exceeds the perimeter of the transversal plane where the arm or the hock meets the lower leg, it cannot compete. This can be double-checked at the fold where leg joint bends.

**Broken Color:** When the front or hind limbs have a dapple or non-solid pattern, the color must not touch the joint at the forearm or hock, or just as in the ruling in the preceding paragraph, the horse cannot compete. It is generally understood that the color on the legs begins at the coronet band.

**Color on the Body:** With the exception of the head area, if there are white markings on the body over a rosy-colored background, the horse will be barred from competition.

**Markings on the Face:** When the markings on the face touch the edge of either eyelid, the horse cannot compete.

**White Markings on Both Nostrils and Both Lips:** When the white color on the face touches in any way or goes beyond the edge of both nostrils and both lips, it is prohibited from competing.

#### **4. THE DIFFERENT GAITS OF THE PASO HORSE:**

##### **THE PASO FINO**

This is the movement characteristic of the Paso Horse such as the Paso Fino. The displacement of the horse's movements is made by lateral forward motions. The sequence of the hoof beats in the transition between lateral leg pairs or bipeds is successive and alternating, marking two beats with each pair to complete four stages. That is, the hind foot of one side is followed by the front foot of the same side, and then the hind foot of the opposite side is followed by the front foot of this same side. In this process, the horse has 8 supporting movements, typified by a triple hind support, a double diagonal support, a triple front support, a double lateral support, and then, in a mirror image of what preceded, a triple hind support, a double diagonal support, a triple front support, and a double lateral support.

During this sequence, the pause between the strikes of the lateral and diagonal are equidistant. It is this equal cadence that is the basic characteristic of the Paso Fino gait and that which distinguishes it from other gaits. Musical to the ear, it translates into rapid and equally spaced movements in a 1-2-3-4 cadence. When the horse is at its top performance, it seems unified and rhythmical, moving its legs smoothly and elastically as the feet meet the ground, projecting itself at an evenly-paced cadence and speed, absorbing the motion in the back and the hind quarters, exhibiting the least amount of lateral and vertical movement possible and in a constant line without any up-and-down movement, making a comfortable ride for the equestrian and making both, horse and rider, seem as one melded entity controlled by the reins and the bit.

##### **THE COLOMBIAN TROCHA PURA**

This is the typical gait of some horses, measured in a rhythmical and harmonious tempo but in four uneven beats, identified by the sound produced by the four beats when the sequence of the cycle is performed. Its sound follows a 1-1-1-1 rhythm.

### **THE COLOMBIAN GALOPE**

This is a movement of forward diagonal propulsion in three beats: the first stage begins with the striking of one hind leg; the second stage is taken by the opposite hind leg and the foreleg diagonal to it; then the third stage is completed when the last foreleg hits the ground. This canter gait sounds like a 1-2-3 beat.

In the three-beat canter, the switch from trot to Galope or from the Trocha gait to the Galope should be a very smooth transition for the rider despite the obvious variation in the two gaits.

At a run, the horse is carried by impulsion from the hind end or train, and the run is produced by a four-beat movement.

### **THE COLOMBIAN TROTE**

This is a movement described by successive and alternating diagonally-paired leg positions or bipeds executed in two beats, which produces a striking sound when making contact with the ground. This sounds like a 1-2-1-2 beat.

## **5. BASIC DEFINITIONS RELATED TO THE PASO HORSE MOVEMENTS**

<b>Gait</b>	Any of the manners in which a horse moves.
<b>Two-gaited</b>	Any horse combining two characteristic gaits (Trote and Galope, and Trocha and Galope).
<b>Single-gaited</b>	Any type of horse known for having one gait (Paso Fino and Colombian Trocha

	Pura).
<b>Harmony</b>	A pleasant combination of sound and movement pleasing to the ear and to the eye.
<b>Beat</b>	The generic name given to the strike of a hoof hitting the ground when the legs are in motion.
<b>Paired Limbs or Biped</b>	The combination of two limbs associated by their placement in relation to an imaginary axis that divides the horse into two lateral sections. These are different from "trains" because the bipeds are formed by a foreleg and a hind leg.
<b>Diagonal Biped</b>	These consist of a foreleg and hind leg from different sectors along the longitudinal axis (opposite sides).
<b>Cadence</b>	The speed of the rhythm represented by the number of beats per unit of time.
<b>Lateral</b>	These are the two limbs that compose the biped, found in the same lateral sector defined by the previously mentioned longitudinal axis.
<b>Limb</b>	A term denoting any extremity of the horse; each of the horse's legs.
<b>Rhythm</b>	The periodic and harmonious occurrence of consecutive sounds produced by the horse's limbs in motion; the timing between one movement and another.
<b>Stage</b>	Stage refers to each of the instances or basic sequences achieved when observing the horse's limbs in motion.

There are four basic stages in the movement of any limb:

**a) Impulsion.** The movement when the limbs execute the

action of impetus and begin to move.

- b) Elevation.** As its name indicates, this refers to the movement beginning from the raising of the hoof from the ground up to the highest point the limb can reach.
- c) Displacement.** This is the limb's forward motion on a horizontal plane.
- d) Support.** This is the contact the hoof makes when it reaches the ground.

### **Train**

The combination of two limbs defined by their placement along the spine of the horse in relation to an imaginary transversal axis.

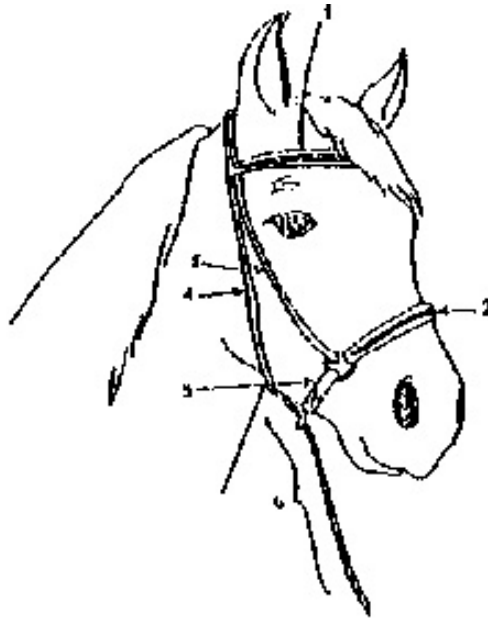
### **Front Train**

The combination of two limbs placed in relation to the axis that cuts across the horse's spine in the front (both forelegs).

### **Rear Train**

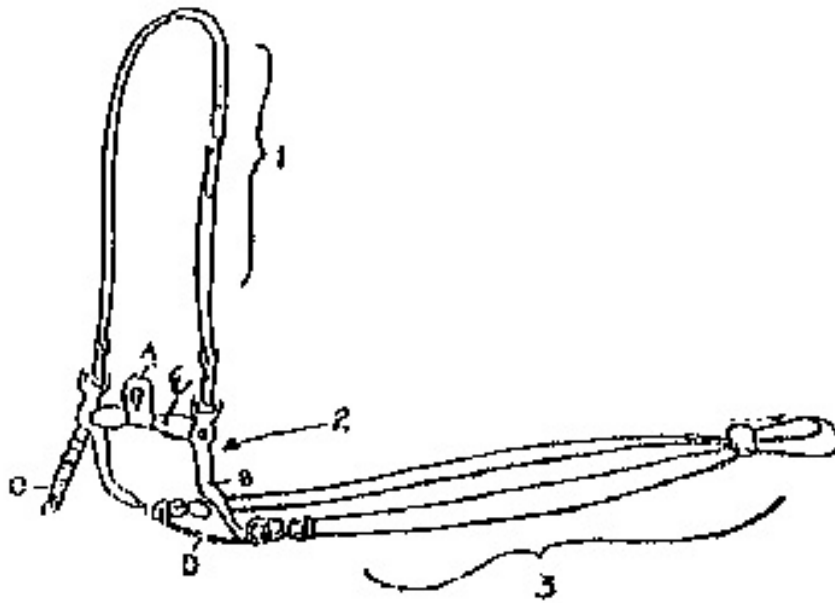
The combination of limbs that, in relation to the axis that cuts across the horse's spine, are found in the rear sector of the front cross-section (both rear legs).

## PARTS OF THE TACK



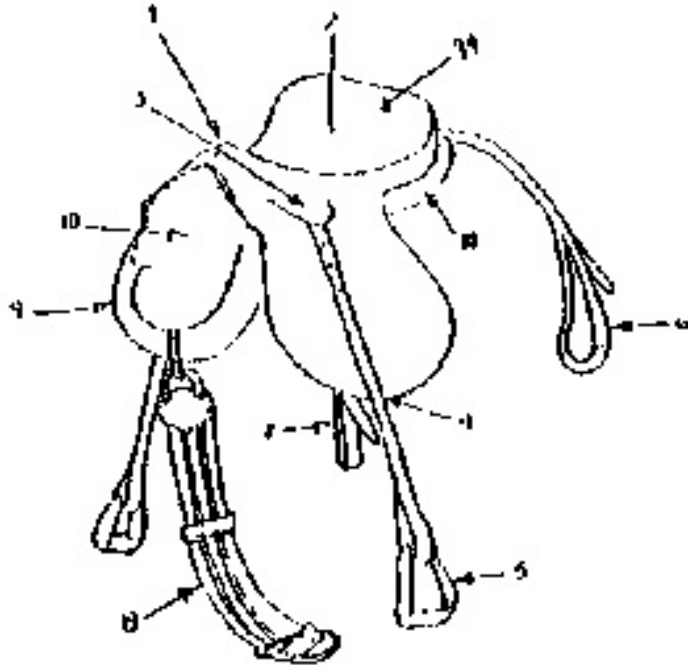
### JAQUIMA

1. Browband
2. Bosal
3. Chin Strap
4. Throat Latch
5. Headpiece
6. Leadline



## BRIDLE

1. Headstall
2. Bit
  - a) Spoon
  - b) Shank
  - c) Chin Strap
  - d) Guide
  - e) Spade
3. Reins



## SADDLE

1. Pommel
2. Seat
3. Skirt
4. Stirrup Leather
5. Stirrup
6. Crupper
7. Cinch Strap
8. Cinch
9. Flap
10. Pad
11. Cante